

S2106 Optical Time Domain Reflectometer

Multi-Functions: OTDR / OPM / LS / VFL / OPT / Event Map / OLT

Key Features

- Less than 0.8m ultra-short event dead zone
- Dynamic range: 35/33dB, maximum to 45dB
- One button Automatic Test and Real Time Test
- Built-in Optical Power Meter Function (OPM)
- Built-in Fiber Visual Fault Locator Function (VFL)
- Built-in Optical Loss Test Function (OLT)
- Built-in Intelligent Optical Link Mapper Function (iOLM)
- Built-in Optical Loss Test (OLT)
- Optional Optical Fiber End Face Detection Function (OFD)
- IP65 protection level, outdoor enhanced
- Unique function for Self-Diagnosis on test result
- English display and input, automatic data storage
- 5.8-inch color LCD touch screen, button/ touch dual operation

Typical Applications

- FTTx test
- CATV network testing
- Access network testing
- LAN network testing
- Metro network testing
- Lab and factory testing
- Live fiber troubleshooting



Saluki S2106 Optical Time Domain Reflector is a high performance multi-function test instrument designed for the FTTx network. The product has a range resolution of up to 0.05m and a ultra-short event dead zone of 0.8m.

This product integrates OTDR, light source, OPM, VFL, event map (iOLM) and OLT function all in one. It adopts touch and button dual operation mode. The product has rich external interface, which can realize remote control through Ethernet interface or two different USB interface for external USB flash drive, printer and data communication with PC.

No.367, Fuxing N. Rd.,105 Taipei,Taiwan Tel: +886.909 602 109

sales@salukitec.com www.salukitec.com



S2106 Optical Time Domain Reflectometer

Multi-Functions: OTDR / OPM / LS / VFL / OPT / Event Map / OLT

Technical Specifications

Parameters	Specifications									
Item	S1	S2	S3	S4	T1	T2	OL1	M1	SM1	
Fiber Type	SMF							MMF	SMF/MMF	
Wavelength (nm)	1310/1550				1310/1490/1550	1310/1550/1625	1310/1550/1625	850/1300	850/1300/1310/1550	
Dynamic Range (dB)	35/33	38/36	42/40	45/43	37/35/35	37/35/35	37/35/35	26/28	26/28/37/35	
Event Dead Zone	1m	0.8m	0.8m	0.8m	0.8m	0.8m	0.8m	1m	1m	
Attenuation Dead Zone	6m	6m	6m	6m	6m	6m	6m	6m	6m	
PON Dead Zone	30M									
Measuring Accuracy	$\pm(0.75m + \text{Sampling interval} + 0.005\% \times \text{test distance})$ (Refractive error are not included)									
Max. Sampling Resolution	0.05m									
Measurement Range (km)	0.5/ 1/ 2/ 4/ 8/ 16/ 32/ 64/128/ 256km									
Pulse Widths (ns)	5/ 10/ 50/ 160/ 320/ 500/ 1000/ 5000/ 10000/ 20000ns									
Loss Threshold (dB)	0.01dB									
Sampling Points	128k									
Linearity	0.05dB/dB									
Loss Resolution	0.001dB									
Memory Capacity	≥ 2000 traces									
External Interface	USB, Min-USB, RJ-45									
Optical Interface	FC / PC / SC / ST (Optional)									

S2106 Optical Time Domain Reflectometer

Multi-Functions: OTDR / OPM / LS / VFL / OPT / Event Map / OLT

VFL Output	650nm±10nm, ≥ 5mW (typical)
Communication interface	USB, Mini USB, 10M/100M Ethernet
LS Output	≥ -5dBm
OPM	+26dBm to -50dBm (replaceable: +6dBm to -70dBm)
Display Resolution	0.01dB
IOR Range	1.0 - 2.0
Data Archive	SOR (standard format), PDF (analysis software)
FTTx GPON Measurement Splitter	1:16 / 1:8
Device Remote Control	By LAN
Laser Source Information	CFR Class1
Distance Unit	m, km
Battery Run Time	Min. 4 hours
Given Pass/ Fail Results	Yes
Bi-directional Analysis Function	Yes
Multitasking Function	Yes

General Information

Display	5.8 inch color LCD touch screen, English Interface
Battery	7.4V / 6700mAh Lithium battery, max. 12 hours working time
Power Supply	AC /DC Adaptor 100V-240V, 50/60Hz, 0.6A
Environment	Operating Temperature: -5 - +50°C / Storage: -20 - +70°C, Relative humidity: 0 - 95% non condensation
Dimension / Weight	227mmx160mmx70mm / ≤1.1kg

No.367, Fuxing N. Rd.,105 Taipei,Taiwan Tel: +886.909 602 109

sales@salukitec.com www.salukitec.com



S2106 Optical Time Domain Reflectometer

Multi-Functions: OTDR / OPM / LS / VFL / OPT / Event Map / OLT

Standard Package

Item	Name	Qty
1	OTDR Host	1 Set
2	AC/DC Power adaptor	1 PC
3	U Disk (containing client simulation analysis software)	1 PC
4	Data Line	1 PC
5	Touch Pen	1 PC
6	OTDR SC adapter	1 PC
7	OPM SC adapter	1 PC
8	Certificate	1 PC
9	User manual	1 PC
10	Certificate of Quality	1 PC
11	Warranty card	1 PC
12	Alcohol clean cotton sheet	5 PC
13	Special backpack for instrument (containing)	1 PC

Attention: The OTDR interface type is standard FC/UPC, FC/APC optional if needed. Due to the need for improvement, the above contents are subject to change without notice.



Optical Time Domain Reflectometer

User Manual

Saluki Technology Inc.

Tel: 886. 909 602 109

Web. www.salukitec.com

Email: sales@salukitec.com

Address: No.367 Fuxing Rd, 105, Taipei, Taiwan (R.O.C)

Preface

Thank you very much for purchasing and using Saluki hand-held multi-function optical time domain reflectometer (OTDR). This manual mainly includes the common operation and maintenance information of the instrument, and common troubleshooting methods. In order to facilitate your use, please read this manual carefully before you operate the instrument.

This manual is limited to use the instruments. Any company or individual without our authorization is not allowed to distort, copy or spread the contents of this manual for commercial purposes

The contents of this manual are subject to change without notice. Please call the supplier if you have any questions, we will provide you with the best quality service.

Safety Attention

External Power Supply

The power adapter input meets the following requirements:

The power adapter output meets the following requirements: The center is positive.

Please use external power supply strictly according to the requirement; otherwise it may cause damage to the instruments.

Internal Battery Supply

The battery inside the instrument is a special lithium battery. In order to give full play to the performance of the battery, please use the internal battery power supply when you start using the instrument. The first use of the battery needs to be depleted, and then charging the battery, the first charging time should be no less than 10 hours. Battery charging temperature range is 0℃~50℃. For your safety, the charge will terminate automatically when the charging temperature is too high. When the instrument is idle for more than two months, it should be charged in time to maintain the battery power. Please don't take out the battery without permission. Please do not let the battery close to the fire source or strong heat. The battery should be removed when the instrument is stored for a long time. The storage temperature range of the battery is -20℃~45℃.

Laser Safety

Please pay attention to avoiding laser output from eyes when using this instrument. Please cover the light output dust cap after the use of the instrument.

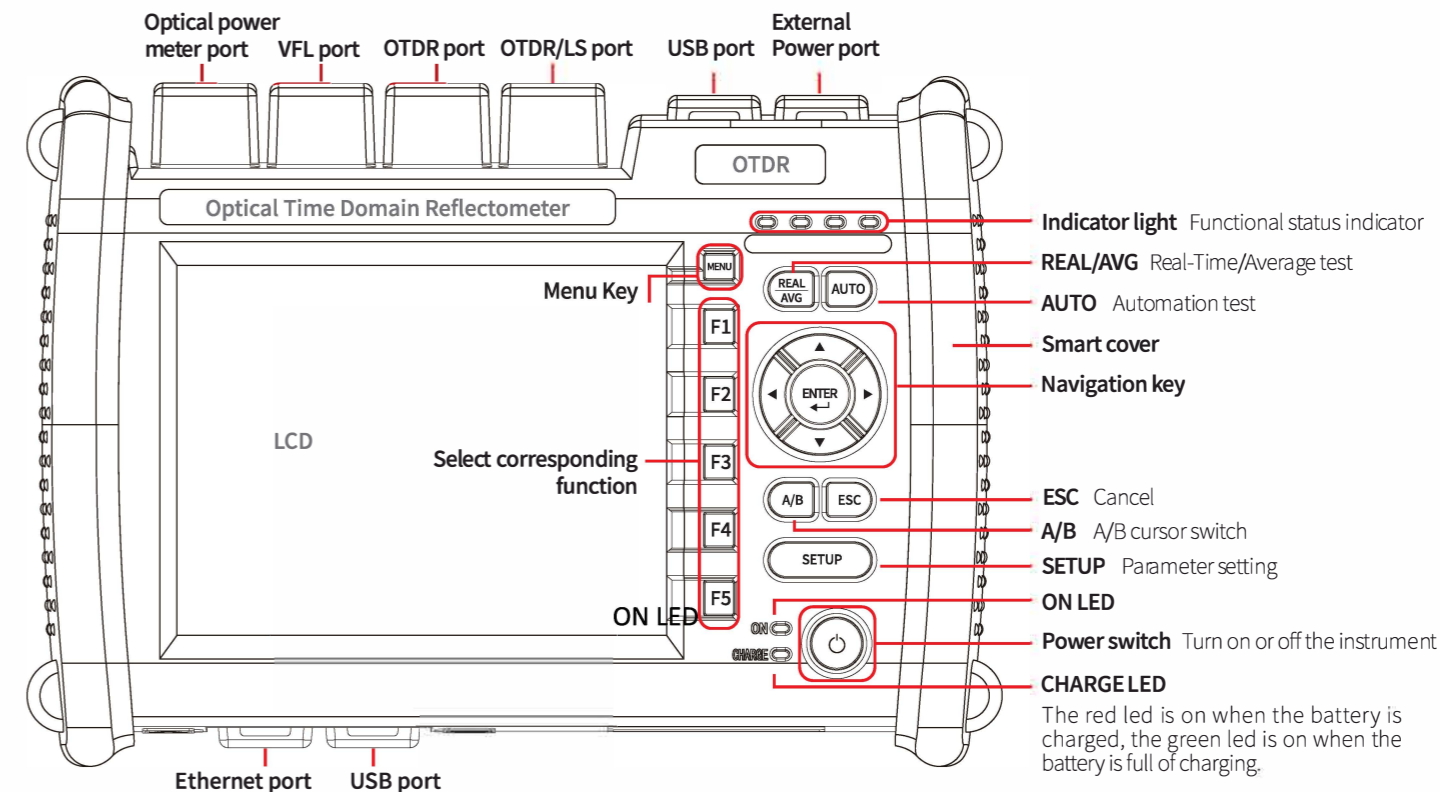
Catalog

Preface

Safety Attention	1
External Power Supply	1
Internal Battery Supply	1
Laser Safety	1
Name and Function of Parts	4
Front Panel, Top Panel and Bottom Panel	4
Display	5
Use Preparation	6
Battery Installation	3
Power ON/OFF	7
Fiber Optic Cable Connection	7
Setting Test Conditions	8
Automatic Test	8
Manual Test	9
Real-Time Test	10
Startup Test	11

Curve analysis results	11
Measuring the distance and average attenuation between two points	13
Event analysis	14
Storage and export of measurement results	15
Optical power meter	17
Laser source(LS)	18
Visual fault location using 650 nm laser(VFL)	19
Optical attenuation test	20
Firmware one button upgrade	21
Client simulation analysis software	22
Batch processing of test data	23
Batch printing of test reports	24
Instrument maintenance and troubleshooting	25
Technical parameters and order information	29
Technical parameter	29
Order information	32

Name and function of parts <Front Panel、Top Panel、Bottom Panel



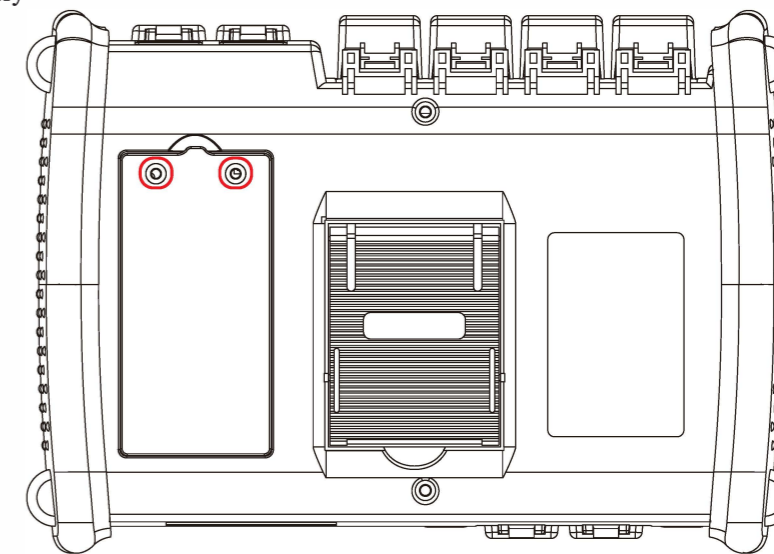
Display<Instrument main interface

Preparation before use
The external power adapter

AC input: 100~240V,600mA,50/60Hz DC output: 19.0V,1.31A

Battery installation

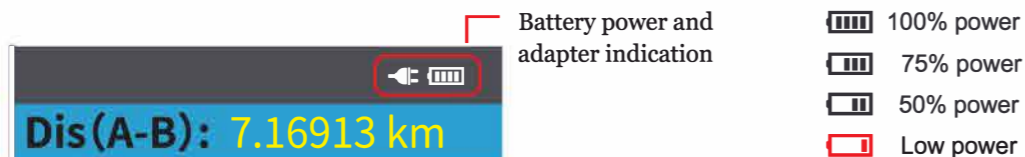
1. Unscrew the two screws on the battery cover(The red circle mark)
2. Remove the battery cover and load the battery
3. Install battery cover and tighten screws



Turn on/off Instrument

Press the button of the switch button, the ON led is on if the instrument starts normally, and the instrument enters the main interface.

When the battery power is too low, warning information will appear, please charge the instrument in time.



Optical fiber connection

Attention:

The laser output port of the instrument or the tail end of the optical fiber connected to the port is prohibited to face the eye in any case; otherwise the eyes will case the damage which can not be restored.

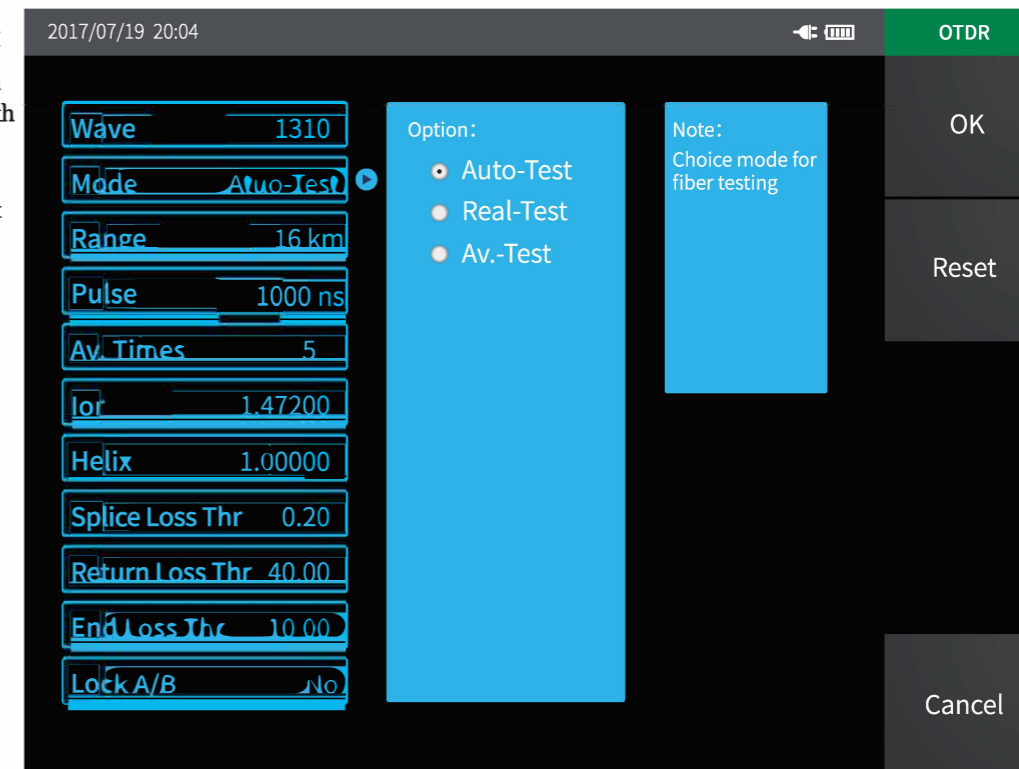
Please confirm whether the connector type matches, whether the end of optical fiber connector cleaned before connecting the optical fiber. The wrong connector type or unclean end of the fiber will cause the test to fail, and may damage the optical interface of the instrument. The correct method of cleaning the optical fiber interface is to clean the end face of the optical fiber connector with anhydrous alcohol, and then connect with the instrument.

The dust cap of the instrument port should be covered so as to prevent dust or other contaminants from polluting the end face of the optical fiber after finishing using.

Setting test parameters

Automatic test

1. Press settings button
2. Select test wavelength
3. Select measurement mode
4. Select automatic test



Manual test

Manual test is a professional test mode, and testers can set test conditions according to the actual situation of the tested optical fiber.

1. Press settings button;
2. Select measurement mode;
3. Select average test;
4. Select the appropriate measurement parameters is beneficial to the accuracy of the test results.

2017/07/19 20:05

OTDR

Wave 1310

Mode Atuo-Test

Range 16 km

Pulse 1000 ns

Av. Times 5

Ior 1.47200

Helix 1.00000

Splice Loss Thr 0.20

Return Loss Thr 40.00

End Loss Thr 10.00

Lock A/B No

Option:

- Auto-Test
- Real-Test
- Av.-Test

Note:
Choice mode for fiber testing

OK

Reset

Cancel

Real-time test

1. Press settings button;
2. Select test wavelength;
3. Select measurement mode;
4. Select measurement range;
5. Select pulse width.

2017/07/19 20:05

OTDR

Wave 1310

Mode Atuo-Test

Range 16 km

Pulse 1000 ns

Av. Times 5

Ior 1.47200

Helix 1.00000

Splice Loss Thr 0.20

Return Loss Thr 40.00

End Loss Thr 10.00

Lock A/B No

Option:

- Auto-Test
- Real-Test
- Av.-Test

Note:
Choice mode for fiber testing

OK

Reset

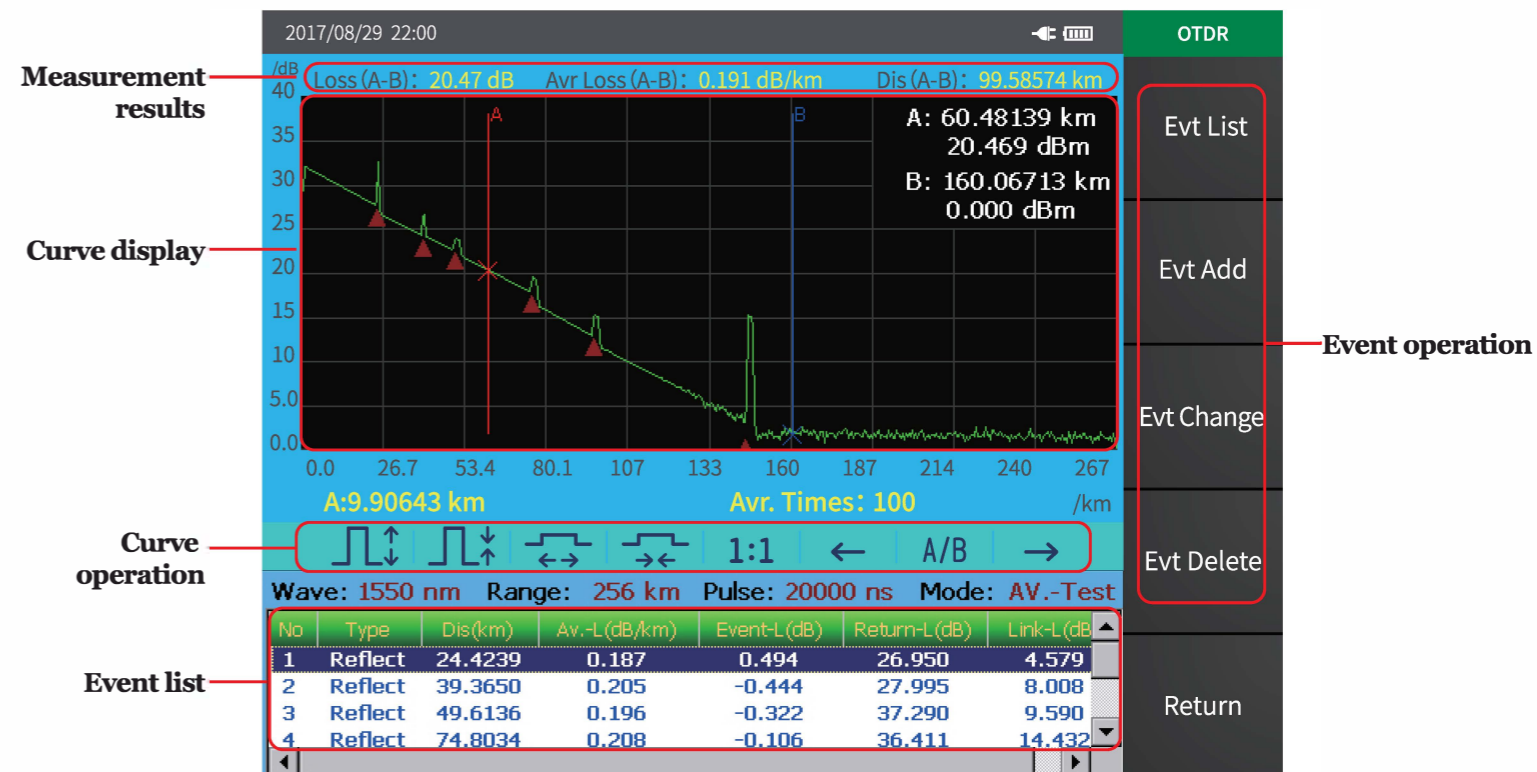
Cancel

Start up measurement

1. Press the test key in the right menu of the OTDR interface to start measurement.
2. Press the 'REAL/AVG' button to start real-time or average measurement.
3. Press the 'AUTO' button to start automatic measurement.

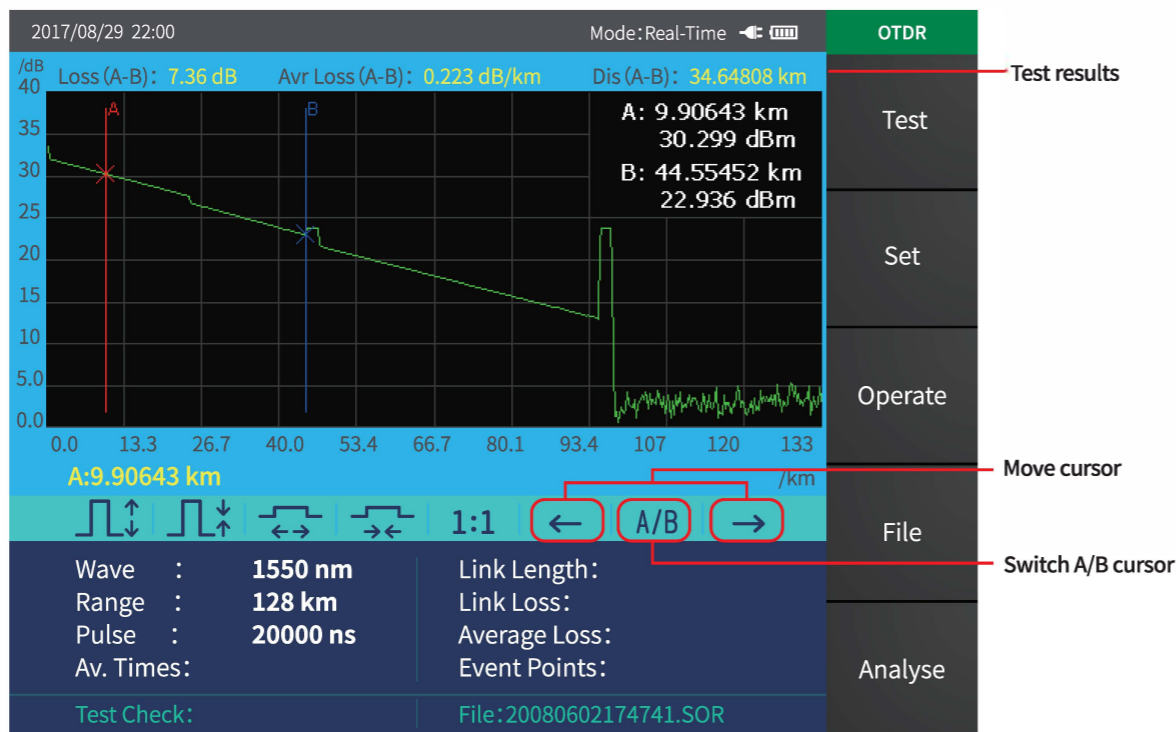
Look up the curve analysis results

Select an event in the event list and the corresponding positions in the curve will be marked accordingly.



Measuring the distance and average loss between two points

Select the curve target position and the current selected cursor will switch to the target position. The navigation key in the key area can also move the cursor position.

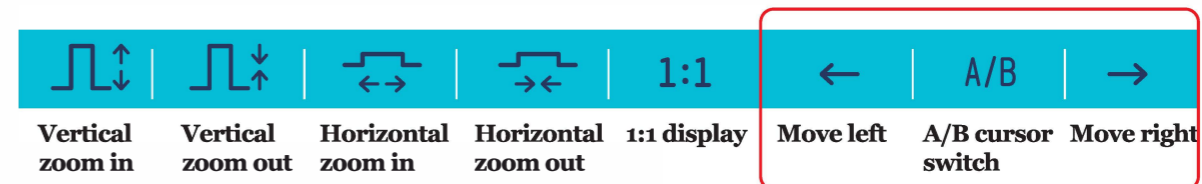


Curve operation

You can do the horizontal and vertical scaling of the curve by the button shown in the figure below, and then restore it in equal proportion.



You can move the A/B cursor left or right by the button shown in the figure below, and switch A/B cursor.

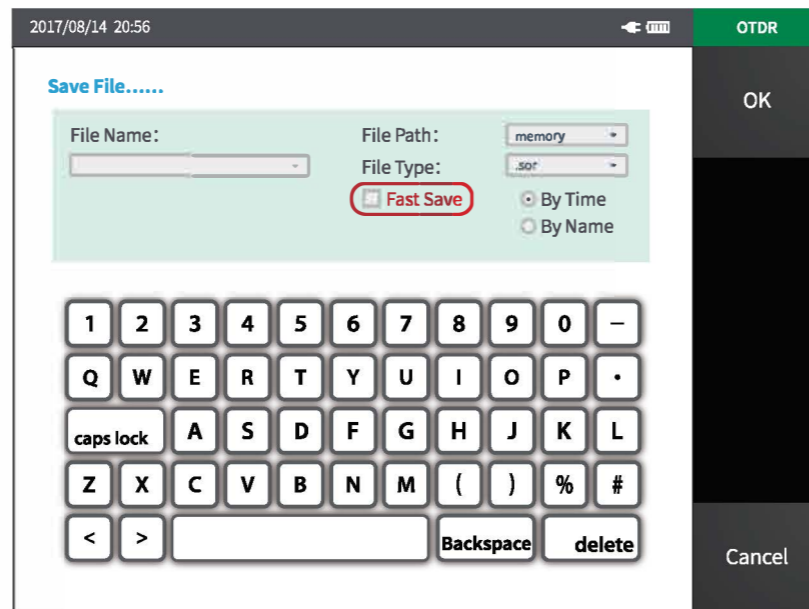
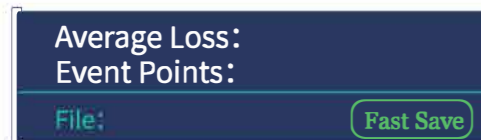


Storage and export of the test results

Storage

Select the file menu under the OTDR interface, and then select Storage button in the pop-up menu, and then pop-up the file save interface which displayed on the right.

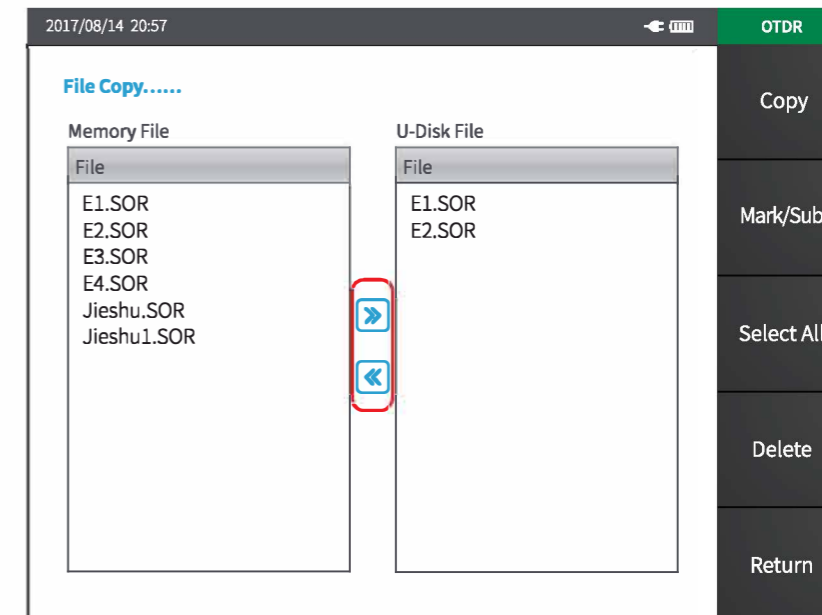
Enter the file name and select the path, and then press the 'Enter' button to save the file. The red circle shown on the right is a one-click storage function which is valid when selected.



Export

Select the file menu under the OTDR interface, and then select copy button in the pop-up menu, and then pop-up the file move interface which displayed on the right.

The red circle shown on the right is a shortcut operation which can realize file copy function.



Optical power meter(OPM)

The screenshot shows the OPM interface with the following elements:

- OPM port:** A red box highlights the 'OPM' button on the top keyboard.
- Measurement result:** A red box highlights the central display area showing:
 - Wave: 1310 nm
 - Reference: 0dBm
 - Abs. Pow 0.0 dBm
 - Rel. Pow 0.0 dB
 - Lin. Pow 1.0 mw
- Measurement setting:** A red box highlights the right-side menu with options: Start, Wave, Reference, Ref-Zero, and Return.

Laser source (LS)

The screenshot shows the LS interface with the following elements:

- LS port:** A red box highlights the 'LS' button on the top keyboard.
- Enable switch:** A red box highlights the four laser source control cards, each with a 'CW' label, a wavelength (1310 nm, 1490 nm, 1550 nm, 1625 nm), and an 'OFF' toggle switch.
- Wavelength list:** A vertical list on the right side shows: 1310nm, 1550nm, and Return.

Visual fault location (VFL)

VFL port

State display

Setting menu

2017/07/19 21:52

VFL

Optical Time Domain Reflectometer

650 nm

Please pay attention to avoiding laser output from eyes when using this instrument.

Normal

1 HZ

2 HZ

Close

Return

Optical attenuation test (OAT)

OAT port

Measurement result

Measurement setting

2017/08/07 22:26

OLT

SF/DUT

Optical Time Domain Reflectometer

LS		OPM	
Mode	CW	IL	0.00 dB
Type	SMF	Abs. Pow	0.00 dBm
Wave	1310 nm	Wave	1310 nm

Start

Wave 1310nm

OPM Ref

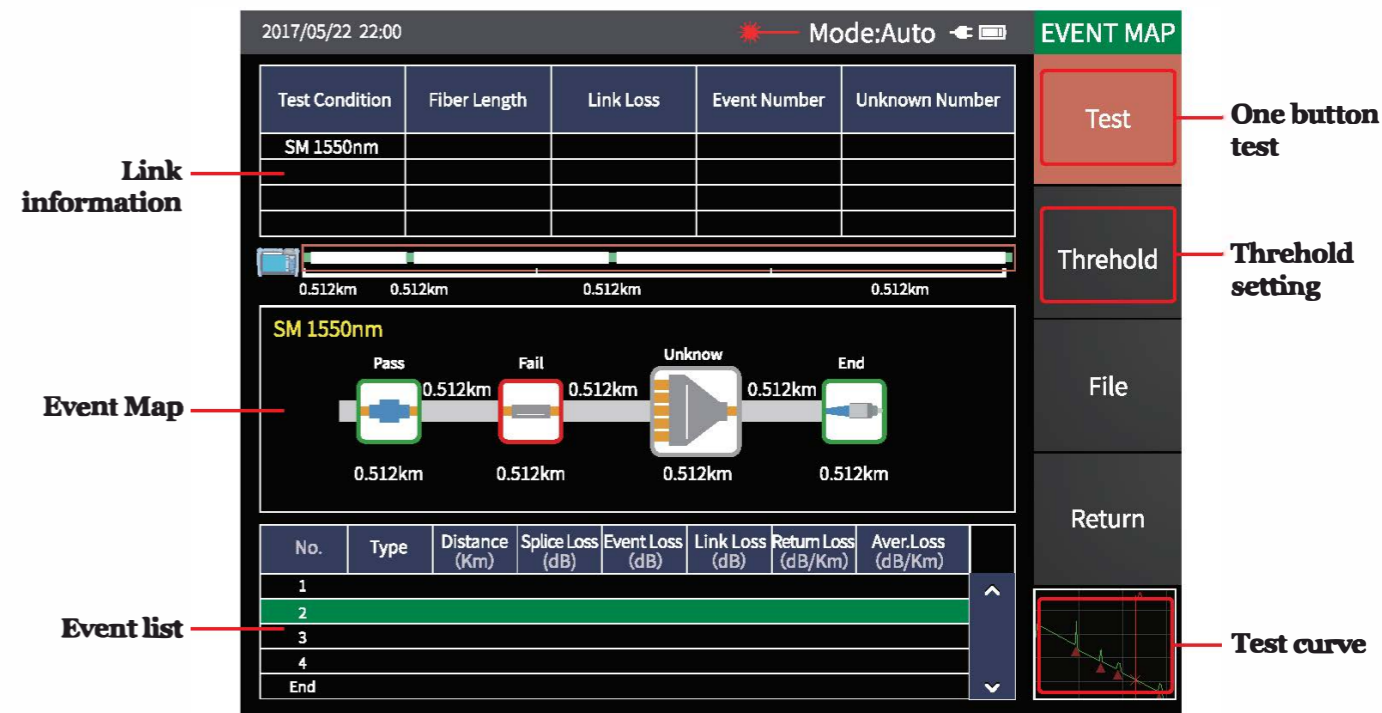
OPM Unit

Return

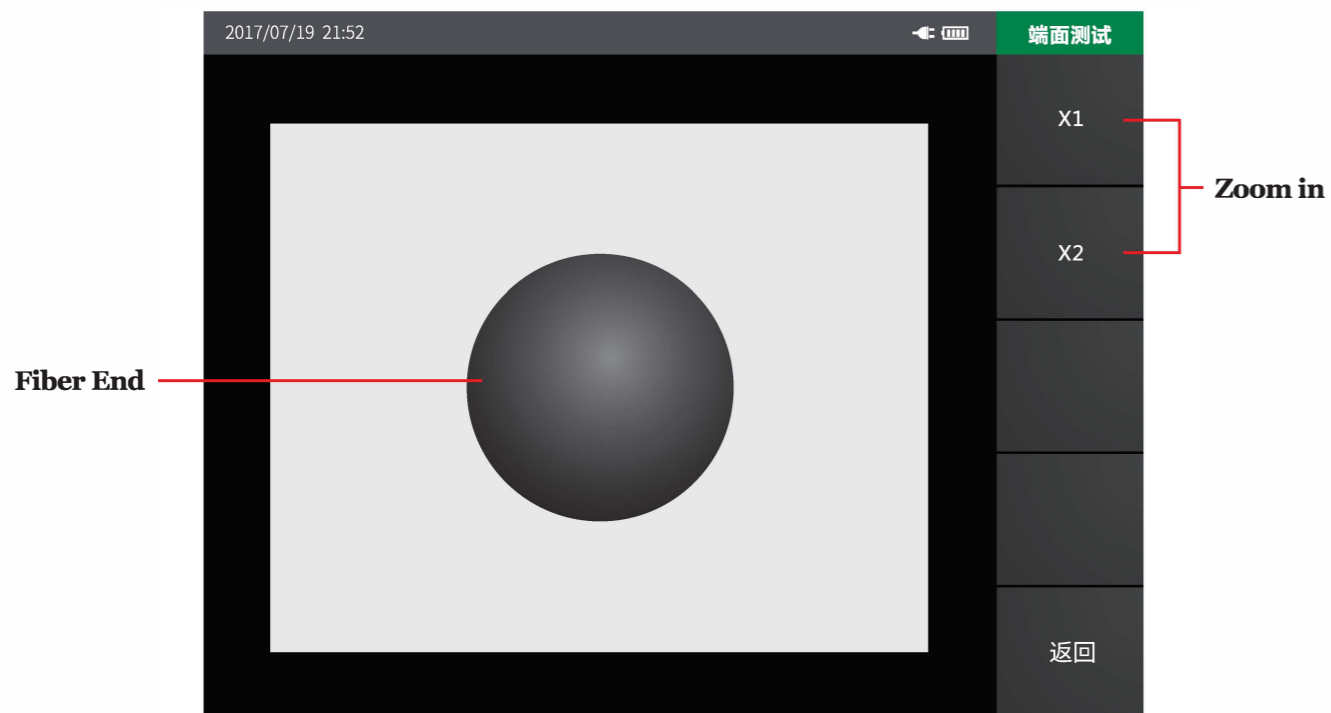
Event Map(iLOM)---Option



Event Map(iLOM)---Option



Optical Fiber End Detect---Option

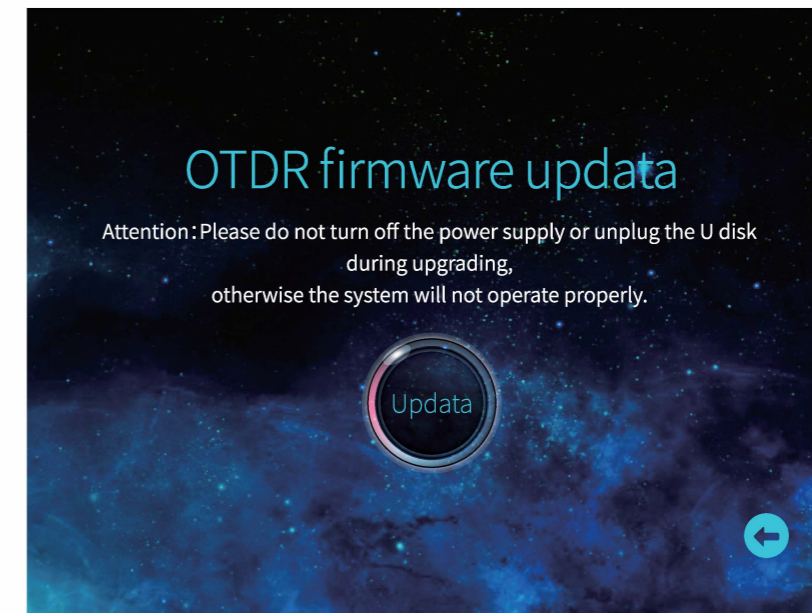


Firmware one button upgrade

The firmware must be stored in the OTDR folder of the U disk, and then accessing the U disk to the instrument, and then click on the upgrade menu under the system to upgrade the firmware.

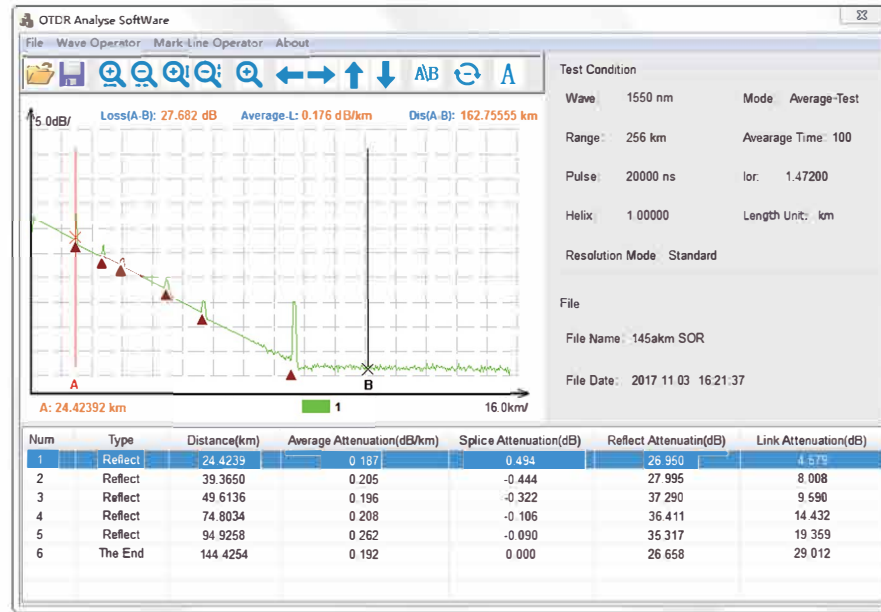
Attention:

Please do not turn off the power supply or unplug the U disk during upgrading, otherwise the system will not operate properly.



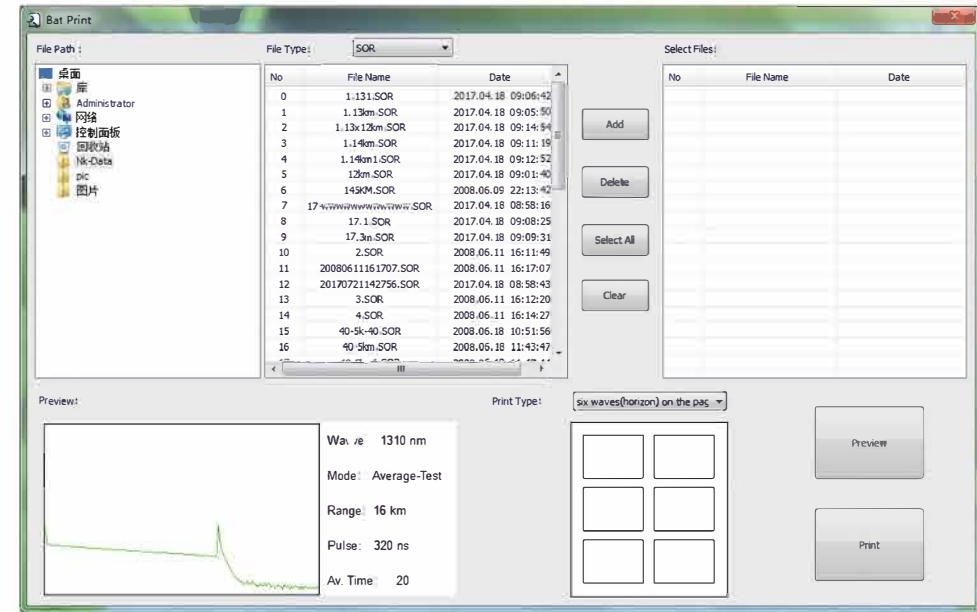
Client simulation analysis software

The instrument is equipped with client simulation analysis software. So the waveform preview, offline analysis, print preview and batch printing progressing can be done at the computer terminal. This can convenient user management and maintenance of optical fiber link database.



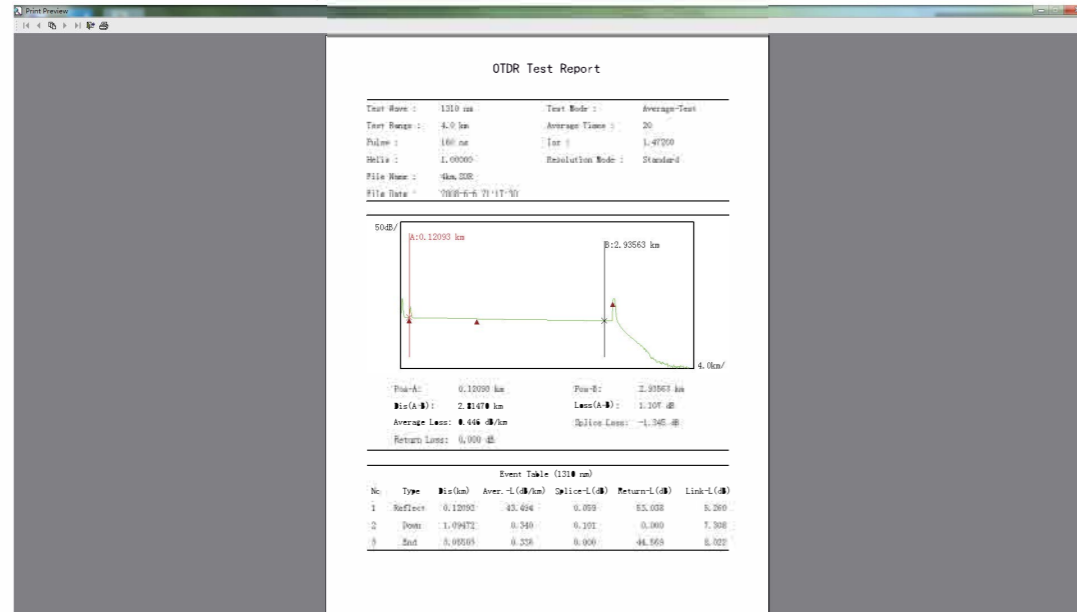
Waveform preview and offline analysis

Select the printed file by previewing the waveform. This can convenient user to submit test report.



Batch printing progressing

You can view test reports by batch print preview. The test reports contains test waveforms, link loss, average loss, event list and other information, and then you can batch print after checking.



Instrument maintenance and troubleshooting

Connector cleaning

The optical output ports of the instrument are a replaceable universal port. It must ensure the end face clean during using. You should consider the connector clean when the instrument is unable to test or test results are not accurate.

Cleaning the end of the optical fiber must be in the state of all functional modules stopped. Please use anhydrous alcohol to clean the end face of optical fiber.

The dust cap of the instrument port should be covered so as to prevent dust or other contaminants from polluting the end face of the optical fiber after finishing using.

Normal maintenance of internal battery

The battery inside the instrument is a special lithium battery. In order to give full play to the performance of the battery, please use the internal battery power supply when you start using the instrument. The first use of the battery needs to be depleted, and then charging the battery, the first charging time should be no less than 10 hours. Battery charging temperature range is 0°C~50°C. For your safety, the charge will terminate automatically when the charging temperature is too high. When the instrument is idle for more than two months, it should be charged in time to maintain the battery power. Please don't take out the battery without permission. Please do not let the battery close to the fire source or strong heat. The battery should be removed when the instrument is stored for a long time. The storage temperature range of the battery is -20°C~45°C.

Instrument screen cleaning and touch calibration

The display of the instrument is a 5.8 inch color LCD with touch screen. Please do not use sharp objects to click on the screen, otherwise it may lead to damage to the LCD screen. You can clean the LCD screen using soft fabric, but do not use organic solvent.

Instrument calibration

It is recommended that the instrument be calibrated once every two years. Please contact the supplier for specific items.

Common faults and troubleshooting

Common faults	Failure cause	Troubleshooting
Instrument can not start normally	Battery Low power	Battery chargingh
Instrument can not charge properly	Ambient temperature is too high or low	Charge the battery in the 0°C~45°C
	Poor battery connect	Check battery connectors
	Instrument problem	Contact supplier
Inaccuracy test results	Incorrect parameter setting	Resetting parameters
	Optical fiber end contamination	Clean the end face of fiber
	Connector type mismatch	Replacing matching connector
	Optical port damage	Replacing fiber connector

Noise too high of test curve	Connector type mismatch	Replacing matching connector
	Pulse width too small	Increasing pulse width
	Incorrect attenuation	Modify attenuation
Saturation of curve front end	Pulse width too large	Reducing pulse width
	Incorrect attenuation	Modify attenuation
Slow down of curve front end	Optical fiber end contamination	Clean the end face of fiber
	Optical port damage	Replacing fiber connector
	Connector types mismatch	Replacing matching connector
Unable to measurement the end of fiber	Range too small	Increasing test range
	Pulse width too small	Increasing pulse width

Event analysis error	Incorrect test conditions	Modify test conditions
Optical fiber length inaccuracy	Incorrect test conditions	Modify test conditions
	Incorrect fiber refractive index	Modify fiber refractive index
	Incorrect optical cable correction coefficient	Modify optical cable correction coefficient
Incorrect average loss	Slow down of curve front end	Clean the end face of fiber
	Incorrect A/B cursor position	Re-selecting A/B cursor position

- The above description only serves as a reference, please refer to the instructions for detailed use. Please contact the suppliers if you have any questions in the use of the instrument.
- You should not disassemble the instrument without permission; otherwise you will lose the warranty.

Technical specifications and ordering information

Technical specifications

Model Item	Multi-Function Optical Time Domain Reflectometer									
	S1	S2	S3	S4	S5	T1	T2	OL1	M1	SM1
Fiber type	SMF								MMF	SMF/MMF
Display	5.8 inch color LCD with touch screen									
Wave-length	1310/1550nm					1310nm/ 1490nm/ 1550nm	1310nm / 1550nm / 1625nm	1310nm / 1550nm / 1625nm	850nm/ 1300nm	850nm/ 1300nm/ 1310nm/ 1550nm
Maximum dynamic range ^①	32/30dB	35/33dB	38/36dB	42/40dB	45/43dB	37dB/ 35dB/ 35dB	37dB/ 35dB/ 35dB	37dB/ 35dB/ 35dB	26dB/ 30dB	26dB/ 30dB/ 37dB/ 35dB
Event blind zone ^②	1m	1m	0.8m	0.8m	0.8m	0.8m	0.8m	0.8m	1m	1m

Attenuation dead zone	6m	6m	6m	6m	6m	6m	6m	6m	6m	6m
Measuring range	500m /1km /2km /4km /8km /16km /32km /64km /128km /256km									
Measuring pulse width	5ns / 10ns/ 50ns/ 160ns/ 320ns/ 500ns/ 1000ns/ 5000ns/ 10000ns/ 20000ns									
Ranging accuracy	$\pm (0.75m + \text{Sampling interval} + 0.005\% \times \text{Test distance})$									
Loss precision	$\pm 0.05\text{dB/dB}$									
Reflection accuracy	$\pm 3\text{dB}$									
Data storage	≥ 2000									
Interface type	FC / PC (Replaceable SC、ST)									
Communication interface	USB、mini-USB、10M/100M Ethernet									
VFL output	$\geq 2\text{mW}$									

LS output	$\geq -5\text{dBm}$
OPM	+26dBm ~ -50dBm (Replaceable: +6dBm ~ -70dBm)
Power supply mode	AC/DC Adapter: AC: 100V ~ 240V, 50/60Hz, 0.6A; Lithium battery: 7.4V 6700mAh
Operating temperature	-5°C ~ 50°C
Storage temperature	-20°C ~ 70°C
Relative humidity	0 ~ 95% Non condensation
Weight	$\leq 1.1\text{kg}$
Volume	227mm × 160mm × 70mm

Attention:

- 1.The test condition of The maximum dynamic range is that which the test ambient temperature is at 25+₋₂, use maximum measured pulse width and average times>300.
- 2.The test condition of event blind zone is using minimum range and minimum pulse width, and the reflection loss of optical fiber end surface.

Ordering information

Num	Name	Quantity
1	OTDR host	1
2	AC/DC power adapter	1
3	Cortical handle	1
4	U disk (containing client simulation analysis software)	1
5	Touch pen	1
6	Data line	1
7	OTDR SC Transfer interface	1
8	OPM SC Transfer interface	1
9	User's Manual	1
10	Test Report	1
11	Warranty card and Certificate	1
12	Clean cotton swab	1
13	Special backpack for instrument (containing suspenders)	1

Attention:The OTDR interface type is standard FC/UPC, FC/APC optional if needed.Due to the need for improvement, the above contents are subject to change without notice.